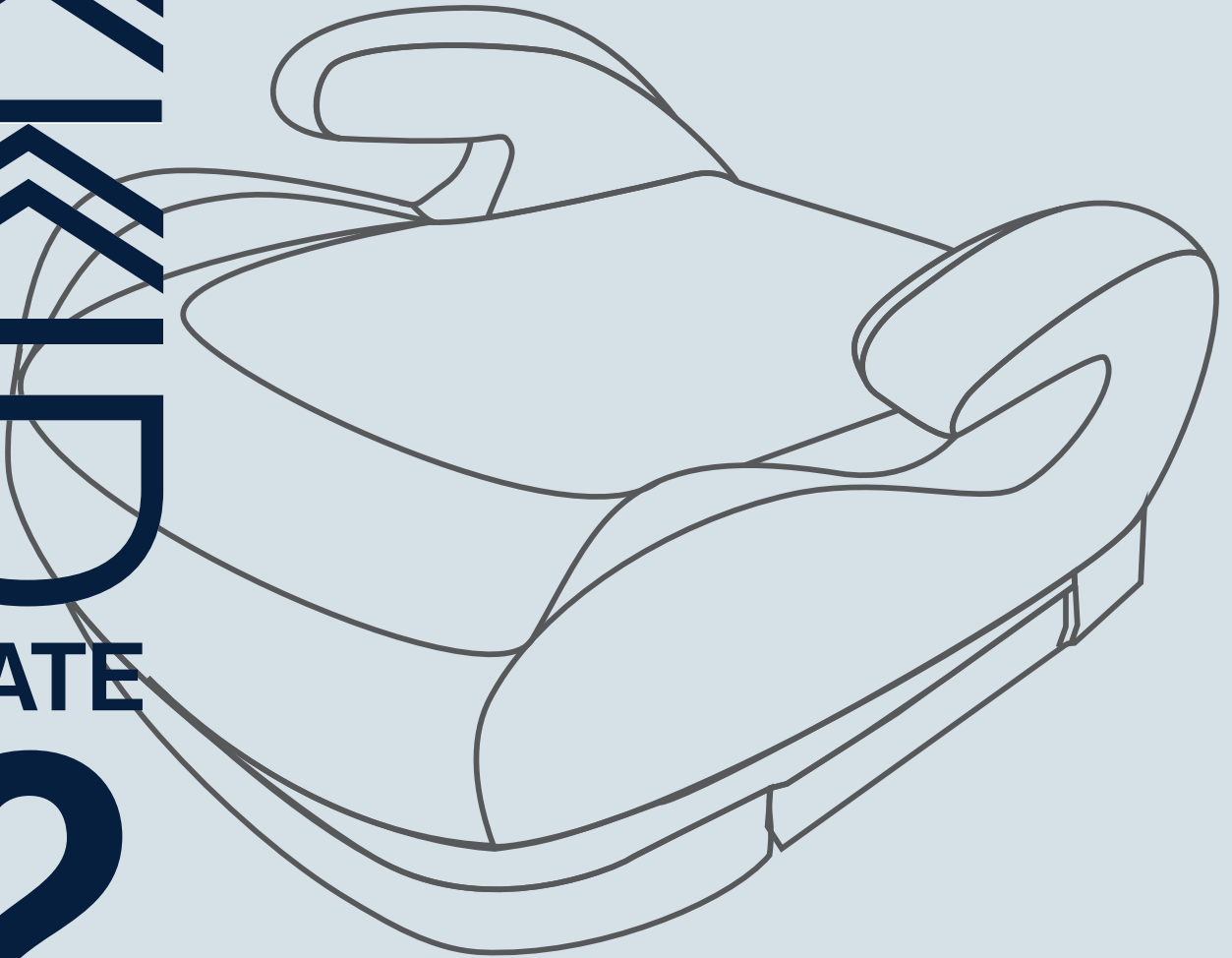


# AXKID MATE 2

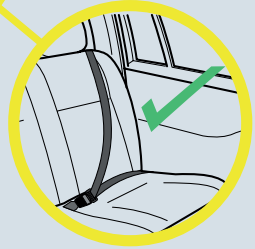
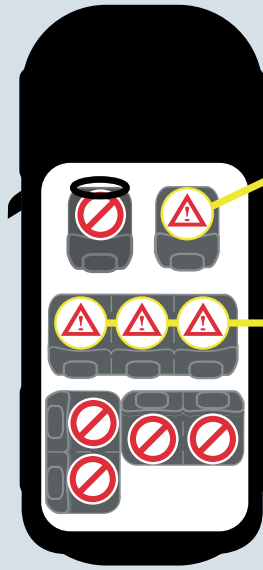


**UN regulation no. 129**  
**Instruction Manual**  
Axkid Mate 2, 125-150 cm

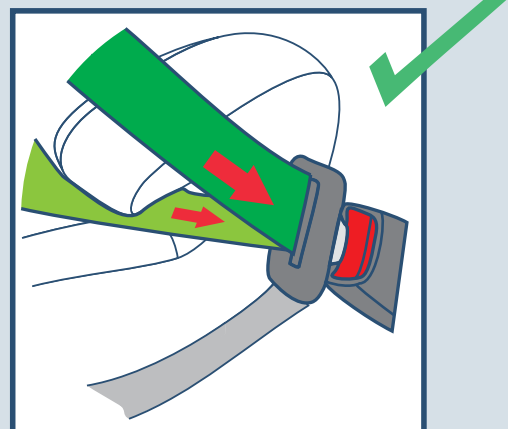
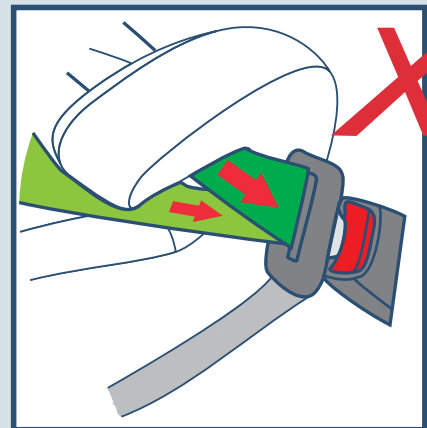




1



2



**Sverige/Norge**

Axkid AB

[www.axkid.com](http://www.axkid.com)

[info@axkid.com](mailto:info@axkid.com)

Tel: (+46) 511 760 620

**UK/Ireland**

Axkid Ltd

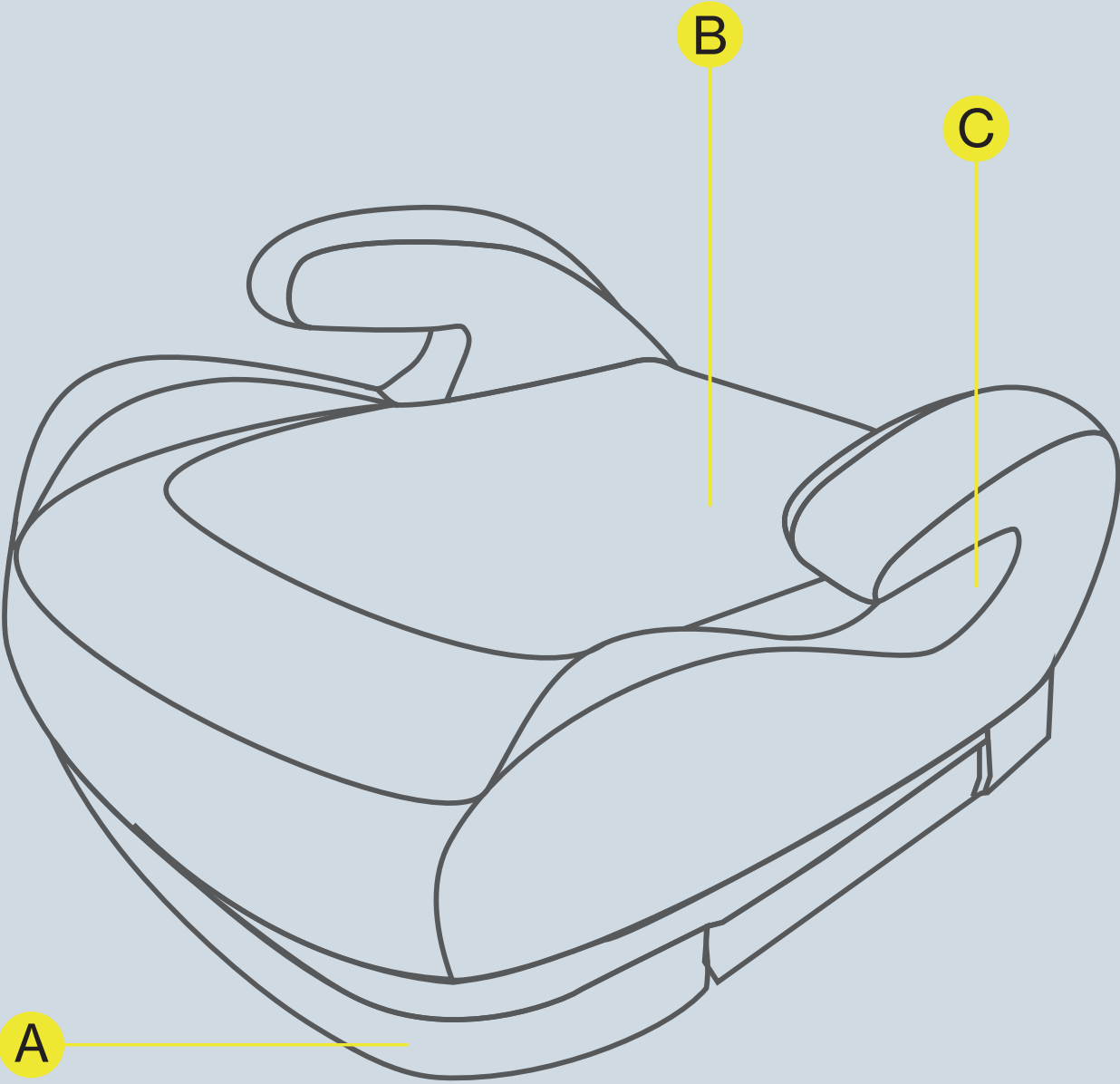
[www.axkid.com](http://www.axkid.com)

[info@axkid.com](mailto:info@axkid.com)

Tel: (+46) 0511 – 760 620

# AXKID

# Parts



A.	Base
B.	Textile cover
C.	Belt guide

# Thank you for choosing Axxkid Mate 2

Read this instruction manual before installing Axxkid Mate 2 car seat in your vehicle. For more information and installation videos visit [www.axkid.com](http://www.axkid.com).

**Axxkid Mate 2** is a forward-facing car seat approved for children between 125 to 150 cm and is approved according to ECE R129.

If in doubt, contact your retailer who can demonstrate a correct installation. An incorrect installation could endanger your child.

## Important information

To maximize your child's safety, it is important that you keep the following in mind:

- Always follow the instructions in this manual. An incorrect installation may seriously affect the safety of your child. If in doubt, contact your retailer who can demonstrate the correct installation.
- Keep this instruction manual for future reference. If manual is lost, you can find it online at [www.axkid.com](http://www.axkid.com)
- Do not use the car seat in a seating position where an active frontal airbag is fitted. If you still wish to install the car seat in this location the airbag must be switched off according to the vehicle manufacturers instructions.
- Should you have an accident, no matter how small, your car seat should always be replaced. It may have damage that is not visible and could seriously affect the safety of your child. For this reason, Axxkid does not recommend purchasing secondhand car seats.
- If the car seat has been exposed to direct sunlight, make sure the car seat is not too hot before installing your child.
- Never leave your child unattended in the vehicle
- Ensure that any luggage or loose objects are secured in your vehicle as they may cause injuries to passengers in the event of an accident.
- Ensure that the car seat is installed in a way where no parts become trapped by movable seats, car doors, etc.
- The car seat may only be installed forward-facing.
- Always make sure that the seat belt is adjusted to correctly fit your child's body.
- Make sure that the child's back is pushed against the car seat when restraining your child with the seat belt.
- Make sure there is no twist in the seat belt.
- Do not attempt to disassemble or modify any part of the car seat. The warranty and the safety performance of the car seat could be affected if doing so.
- Never use the car seat without the textile cover. The seat textile cover is a safety feature and may only be replaced with an Axxkid original seat textile cover.
- Read the vehicle handbook to find which seating positions is suitable for this seat.
- Axxkid recommends to always use a seat protection to protect your vehicle seat from scratches and dirt.
- Note: If you have any doubts, contact the retailer where the car seat was purchased or contact [info@axkid.com](mailto:info@axkid.com)

## Product description

Product	Group	Installation	Type
Forward facing	125-150 cm	Vehicle 3-Point Belt	Universal booster cushion

# Allowed and disallowed positions

The Axxkid Mate 2 can be used on any forward-facing passenger seat which has a 3-point seat belt, approved to UN/ECE Regulation No. 16 or other equivalent standard. The Axxkid Mate 2 cannot be used with a 2-point lap belt.

Front passenger seat (no active airbag)	YES
Front passenger seat (active airbag)	NO*
Forward-facing seat with 3-point safety belt	YES
Seat with 2-point safety belt	NO
Side-facing seats	NO
Rear-facing seats	NO

**IMPORTANT:** The child should be a minimum of 140 cm in height to sit in front of an active airbag unless there are other recommendations from the car manufacturer. If you still wish to install Axxkid Mate 2 in such seating position the airbag must be switched off according to the vehicle manufacturers instructions. It is important to always check if the vehicles indicator light shows that the airbag is turned off.

**IMPORTANT:** Never use on rearward or side facing vehicle seats.



## Installing the car seat in the vehicle & restraining your child

- 1** Place the child car seat in a suitable forward-facing position. If the vehicle's seat back is adjustable, ensure it is in the upright position.
- 2** Move the belt in front of the child to the vehicle belt buckle. Insert the seat belt into the vehicle belt buckle and make sure that you hear a click. Pass the lap belt through the green lap belt side guide. Finally, check that all slack has been removed from the vehicle seat belt.

**WARNING:** An unoccupied car seat should be secured using a 3-point seat belt.

**IMPORTANT:** Make sure the seat belt buckle is not wedged or interfering with the belt guides

**IMPORTANT:** Never place your child in the car seat when it is not fitted in a vehicle.

**IMPORTANT:** The lap belt shall be worn low over the hips. Check that the lap belt passes through both green lap belt side guides.

**IMPORTANT:** Reclining the vehicle seat may adversely affect the position of the vehicle seat belt and may result in death or serious injury during a crash. Refer to your vehicle owner's manual for adjusting the vehicle seat back with car seats.

# Care and maintenance

The cover can be removed for washing under 30 degrees clean water;  
Clean the shell using a damp cloth.

## Recycling your seat



Axkid strongly recommends recycling of old car seats. Before leaving the base at your local recycling station separate metal and plastic parts if possible. The main part of the base should be marked unsafe or expired (use a marker) to deter anyone from using it again. Please check your local municipal guidelines for recycling instructions for the different materials.

# Warranty

Axkid Mate 2 is covered by a 24-month warranty from date of purchase. Ensure you save your receipt and bring it to your place of purchase if you have any warranty issues.

The warranty does not cover:

- Normal wear and tear
- Damage due to incorrect use, neglect, or accident
- If repairs have been carried out by a third party
- All materials used have a very high UV-resistance rating. However, UV-light is very aggressive and will ultimately lead to fading of the seat cover. This is not covered by our warranty as it is considered normal wear and tear.